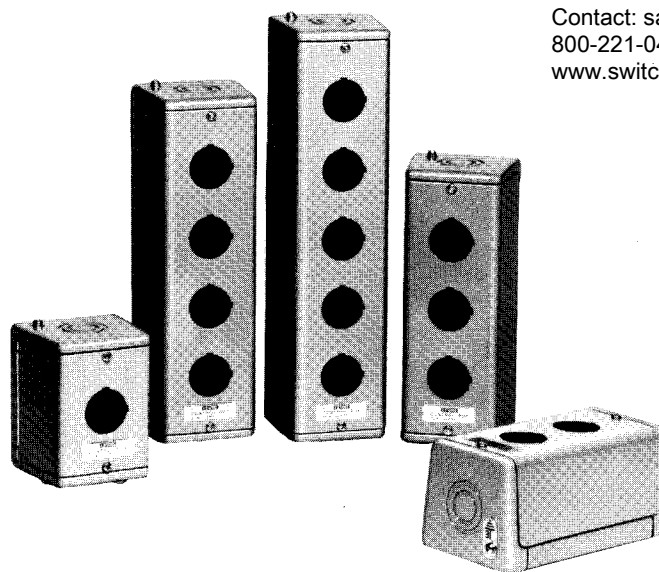


## CONTROL BOXES

IDEC IZUMI CORPORATION

Switches Unlimited  
Contact: sales@switchesunlimited.com  
800-221-0487 □ Fax: 718-672-6370  
www.switchesunlimited.com

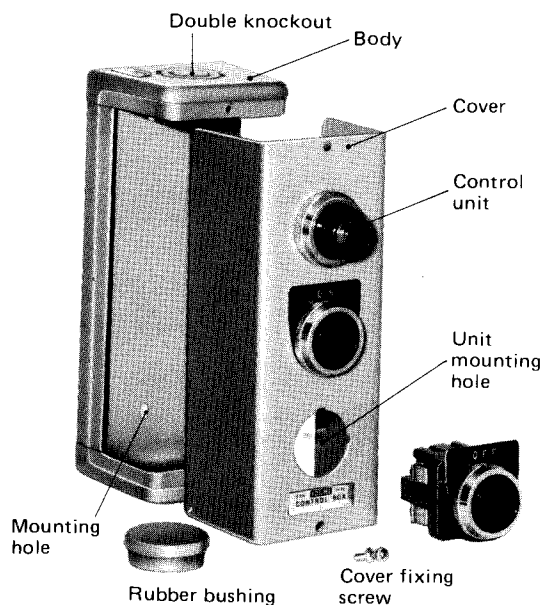


### Enclosed Type Sheet Steel Boxes With 30.5 or 22.2mm-dia Control Unit Mounting Holes

The KGN is available with one to five holes for mounting 30 mm (1-13/64 inch) dia control units and the KGNW with one to four holes for mounting 22 mm (7/8 inch) dia control units. Both boxes are designed for use on machine tools, switch boards, control stations, and other industrial electrical equipment.

Degrees of protection: TYPE 2 (NEMA ICS1-110), Enclosed Type (JEM1030)

### CONSTRUCTION



#### •Body and Cover

The body and cover are made of rigid sheet steel with drawn sides.

Standard coating color: Munsell 5Y7/1

#### •Double Knockouts

The upper end has a double knockout of 22 and 27 mm in diameter and the lower end 16 and 20 mm to provide for cable entry of a required diameter.

#### •Rubber Bushing

One rubber bushing is furnished to protect lead-in wires from damages on the surface; 1- and 2-hole boxes are supplied with a bushing to fit 20 and 22 mm dia holes, and 3-, 4-, and 5-hole boxes with a bushing to fit a 27 mm dia hole.

#### •Ground Terminals

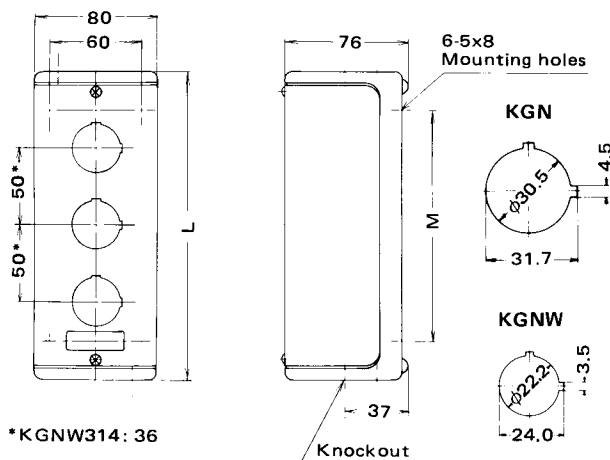
Provided on the top and bottom of the body for ground connection.

#### •Control Units (Optional)

The KGN can mount 30 mm-dia control units, such as pushbuttons, pilot lights, selector switches and buzzers. In addition, the KGNW can also mount alternate and transformer type illuminated pushbuttons due to the space-saving design of the  $\phi 22$  TW series control units.

# TYPE KGN•KGNW CONTROL BOXES

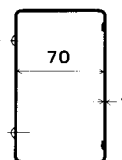
## TYPES & DIMENSIONS



All dimensions in mm.

No. of holes		1	2	3	4	5
Type No.	KGN	KGN111Y	KGN211Y	KGN311Y	KGN411Y	KGN511Y
	KGNW	KGNW111Y	KGNW212Y	KGNW313Y	KGNW314Y	—
Dimension L (mm)	KGN	100	150	200	250	300
	KGNW	100	150	200	200	—
Dimension M (mm)	KGN	50	100	150	200	250
	KGNW	50	100	150	150	—
Weight (kg)	KGN	0.31	0.42	0.53	0.64	0.75
	KGNW	0.31	0.42	0.53	0.52	—

Effective Depth in The Box



NOTE:

On boxes with more than one unit mounting hole, the spacing between adjacent holes is 50 mm each, except 36 mm on the KGNW314 which has four 22.2 mm-dia holes.

## ORDERING INFORMATION

- When ordering boxes only.  
Specify the Type No. and quantity.
- When ordering boxes mounted with required control units.  
Specify the following items by referring to our catalog EP417 Control Units:

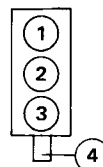
1. Type No. of the box.
2. Type No. and specifications (lens or button color, etc.) of the control units to be mounted, if necessary.
3. Nameplates, if required.
4. Gland Hub  
When a gland hub is required for the AGA or AGAW control box, specify the Type No. and the cable diameter. See page 2.
5. Other requirements.

NOTE:

1. Units to be mounted can be chosen from  $\phi 30$  or  $\phi 22$  control units, then the effective depth in box should be taken into consideration.
2. Assembling and approved drawings are available at an additional charge.

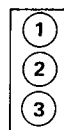
## EXAMPLE OF DESIGNATION

- For AGA or AGAW Control Box with Control Units



Box Type No.		AGA311
Control Units and Nameplates	1	APN126-R
	2	ABN210, with NA-1
	3	ABN210, with NA-2
Gland Hub		4 HNAG22 (R15)

- For KGN or KGNW Control Box with Control Units



Box Type No.		KGN311
Control Units and Nameplates	1	APN126-R
	2	ABN210, with NA-1
	3	ABN210, with NA-2

Switches Unlimited

Contact: sales@switchesunlimited.com

Phone: 800-221-0487 □ Fax: 718-672-6370

www.switchesunlimited.com

Specifications and other descriptions in this catalog are subject to change without notice.