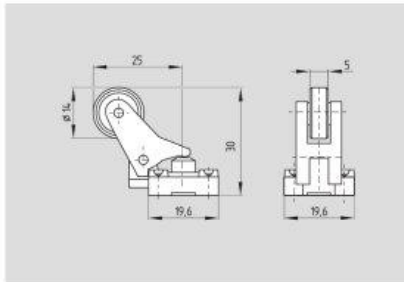


## Position switches with safety function

### Angle roller lever 3K



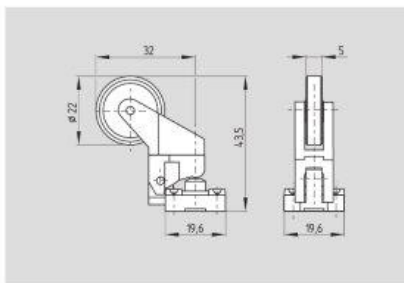
- Actuating force: Min. 9 N
- Positive break force: 19 N
- Actuating speed with actuating angle 30° to switch axis  
Snap action: Min. 27 mm/min, max. 1 m/s  
Slow action: Min. 160 mm/min, max. 1 m/s
- Actuation from bottom parallel to the switch, therefore only suitable for small housings (Z/T 235 and Z/T 236)

### Contact variants

Switch travel/Contacts	Snap action	Slow action	Slow action with overlapping contacts	Slow action with staggered contacts
<b>1 NO contact / 1 NC contact</b>	EX-Z3K 235-11Z-3D 	EX-T3K 235-11Z-3D 	EX-T3K 235-11ZUE-3D 	
<b>2 NC contacts</b>	EX-Z3K 235-02Z-3D 	EX-T3K 235-02Z-3D 		EX-T3K 235-02ZH-3D 
<b>2 NO contacts</b>		EX-T3K 235-20Z-3D 		EX-T3K 235-20ZH-3D 

Dust zone 22

### Angle roller lever 4K



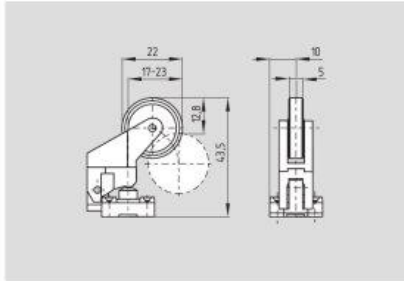
- Actuating force: Min. 6 N
- Positive break force: 16 N
- Actuating speed with actuating angle 30° to switch axis  
Snap action: Min. 44 mm/min, max. 1 m/s  
Slow action: Min. 264 mm/min, max. 1 m/s
- Actuation from bottom parallel to the switch, therefore only suitable for small housings (Z/T 235 and Z/T 236)

### Contact variants

Switch travel/Contacts	Snap action	Slow action	Slow action with overlapping contacts	Slow action with staggered contacts
<b>1 NO contact / 1 NC contact</b>	EX-Z4K 235-11Z-3D 	EX-T4K 235-11Z-3D 	EX-T4K 235-11ZUE-3D 	
<b>2 NC contacts</b>	EX-Z4K 235-02Z-3D 	EX-T4K 235-02Z-3D 		EX-T4K 235-02ZH-3D 
<b>2 NO contacts</b>		EX-T4K 235-20Z-3D 		EX-T4K 235-20ZH-3D 

## Position switches with safety function

### Angle roller lever K4

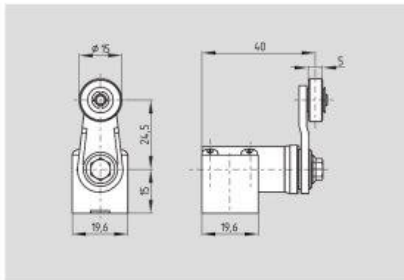


- Actuating force: Min. 6 N
- Positive break force: 16 N
- Actuating speed with actuating angle 30° to switch axis  
Snap action: Min. 56 mm/min, max. 1 m/s  
Slow action: Min. 336 mm/min, max. 1 m/s

### Contact variants

Switch travel/Contacts	Snap action	Slow action	Slow action with overlapping contacts	Slow action with staggered contacts
<b>1 NO contact / 1 NC contact</b>	<b>EX-ZK4 235-11Z-3D</b> 	<b>EX-TK4 235-11Z-3D</b> 	<b>EX-TK4 235-11ZUE-3D</b> 	
<b>2 NC contacts</b>	<b>EX-ZK4 235-02Z-3D</b> 	<b>EX-TK4 235-02Z-3D</b> 		<b>EX-TK4 235-02ZH-3D</b> 
<b>2 NO contacts</b>		<b>EX-TK4 235-20Z-3D</b> 		<b>EX-TK4 235-20ZH-3D</b> 

### Roller lever 1H



- Plastic lever
- Actuator type A to EN 50047
- Angle of roller lever adjustable in 10° steps
- Actuating torque: Min. 15 Ncm
- Positive break torque: 18.5 Ncm
- Actuating speed with actuating angle 30° to switch axis  
Snap action: Min. 92 mm/min, max. 1 m/s  
Slow action: Min. 492 mm/min, max. 1 m/s
- Actuator head gasket, ordering suffix -Z

### Contact variants

Switch travel/Contacts	Snap action	Slow action	Slow action with overlapping contacts	Slow action with staggered contacts
<b>1 NO contact / 1 NC contact</b>	<b>EX-ZV1H 235-11Z-3D</b> 	<b>EX-TV1H 235-11Z-3D</b> 	<b>EX-TV1H 235-11ZUE-3D</b> 	
<b>2 NC contacts</b>	<b>EX-ZV1H 235-02Z-3D</b> 	<b>EX-TV1H 235-02Z-3D</b> 		<b>EX-TV1H 235-02ZH-3D</b> 
<b>2 NO contacts</b>		<b>EX-TV1H 235-20Z-3D</b> 		<b>EX-TV1H 235-20ZH-3D</b> 

Dust zone 22